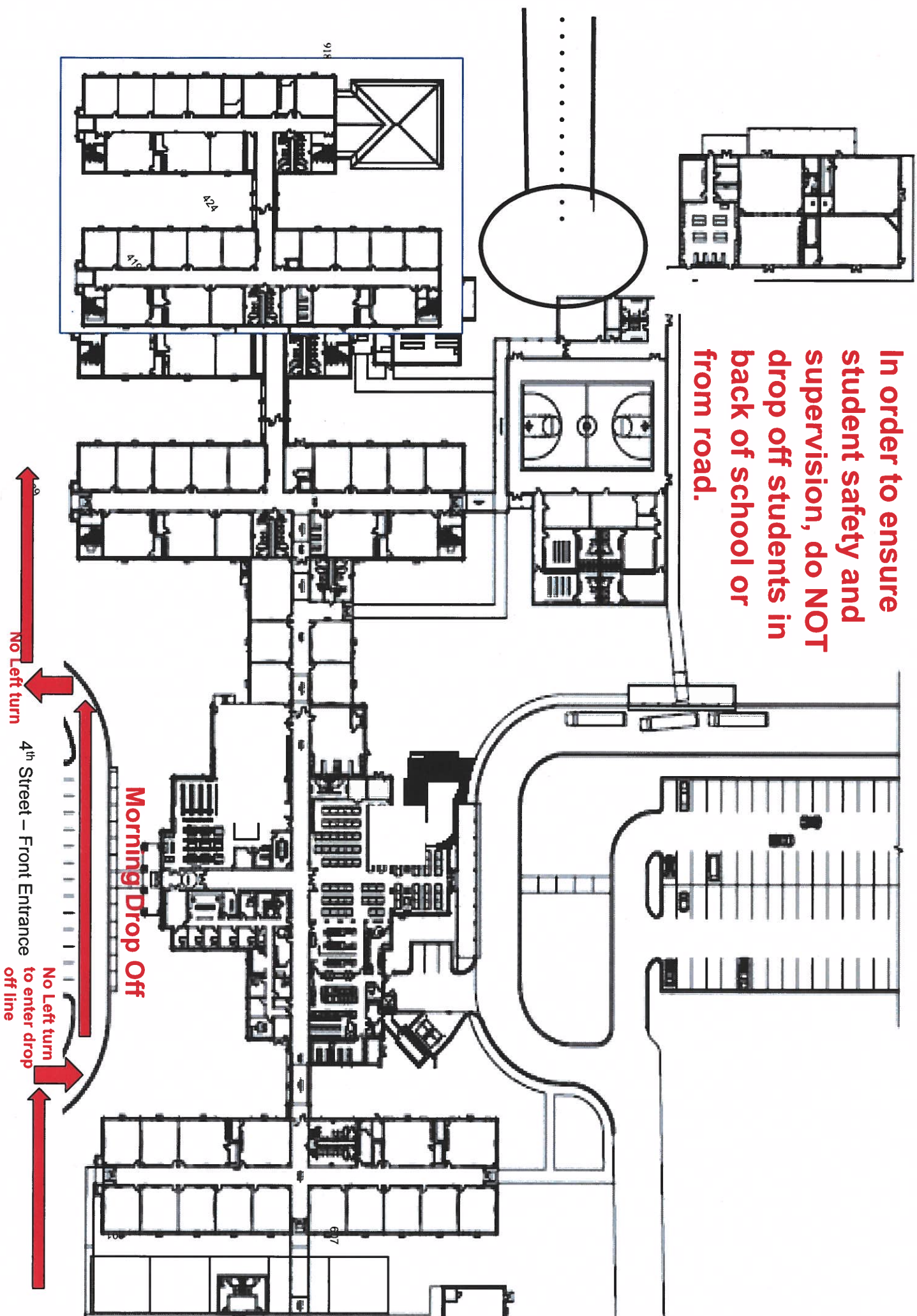
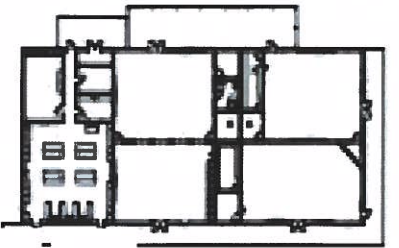


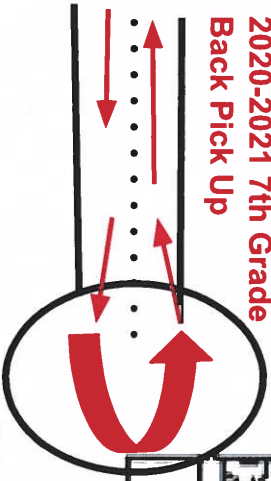
In order to ensure student safety and supervision, do NOT drop off students in back of school or from road.



In order to ensure student safety and supervision, do NOT pick up students from the road.



2020-2021 7th Grade Back Pick Up



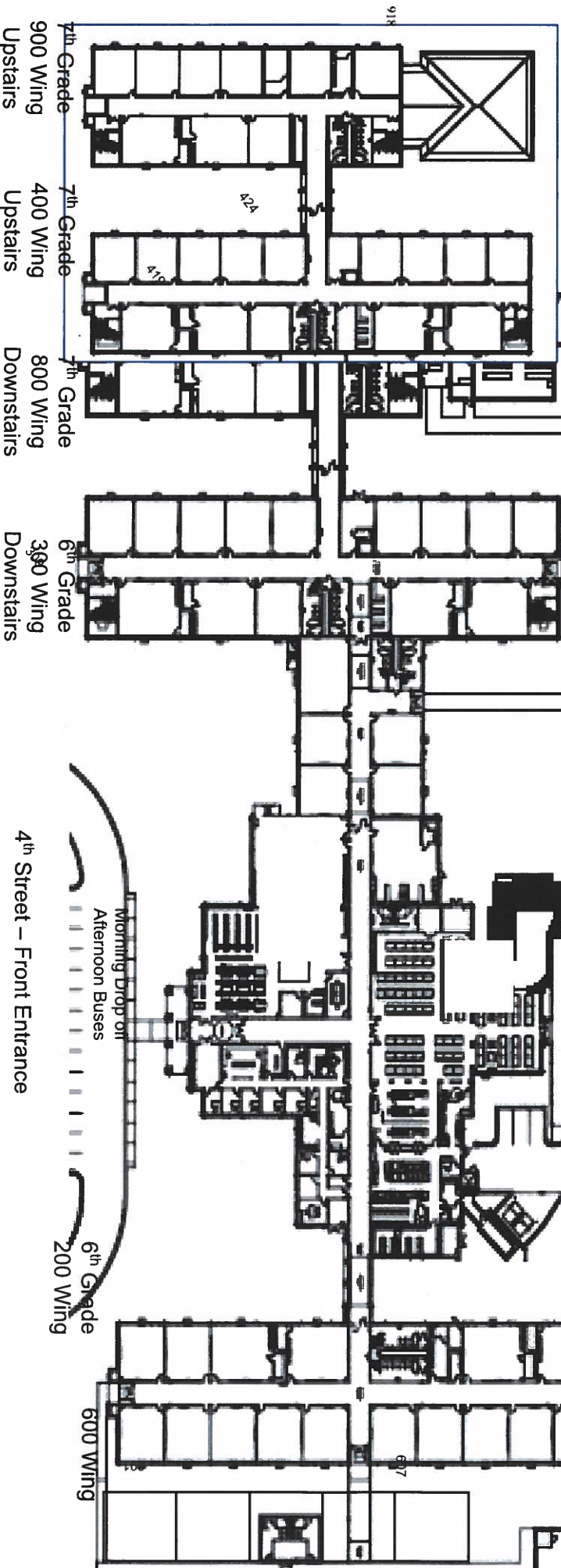
Enter From No Name behind Stadium

double line

2020-2021 6th Grade Back Pick Up

Exit out of Stadium Drive

single line



9th Grade 900 Wing Upstairs

7th Grade 400 Wing Upstairs

7th Grade 800 Wing Downstairs

6th Grade 300 Wing Downstairs

4th Street - Front Entrance

Morning Drop off Afternoon Buses

6th Grade 200 Wing

600 Wing

2020-2021 Parent Pick Up Instructions

6th Grade Pick Up

Parents will enter the pick up line on the road behind the stadium from 7th Avenue that is the road closest to the stadium. Vehicles will drive down and enter the 3rd entrance. This will be the entrance closest to the school. Vehicles should fill the line until the first vehicle is located in front of WJW Cafeteria in a single line. When the vehicle line reaches the front of the gym we will double line the pick up line. There will be cones at this location to help people know where to start the double line. When students start entering vehicles and the line starts moving, vehicles should alternate every other vehicle entering the single line from the double line. The double line will continue and back up going behind the stadium.

***** Vehicles will not be able to enter the pick up line except from 7th Avenue**

7th Grade Pick Up

Parents will enter the school gate down 5th street SW that runs between the recreational gym and diving/swimming pool. Vehicles will enter the gate on the right side and pull around the circle. After the student is picked up, the vehicle will exit back through the gate on the right side.

***** Any parents that have a 6th AND 7th Grade students to pick up need to be picked up in the 6th Grade pick up line**